

# Mini Compact DVR DD-407M

**RETINEX**

All New!!!

Media player intergrated All-in-one DVR  
Patent Applied MP3 player built in  
Talent Mounted : DVR & Media Player functions!!



## Features

- H.264 Hardware Codec
- Camera(NTSC, PAL) Auto-Detection
- RJ11 Connection with Cameras
- Power, Signal simultaneous transmission
- Back up( USB Flash Drive or via USB host)
- Advanced remote monitoring system
- Searching through internet
- Multi-language supportable
- Quadplex  
(Live, Playback, Recording, Network)
- Easy to control P/T/Z
- Digital Zoom
- 7" Wide Digital LCD Built-in
- DVR provides electricity to Max 4 cameras
- Easy to Install & Use
- Noise free, LCD on/off
- 64CH CMS free
- Supports Apple, Android mobile devices

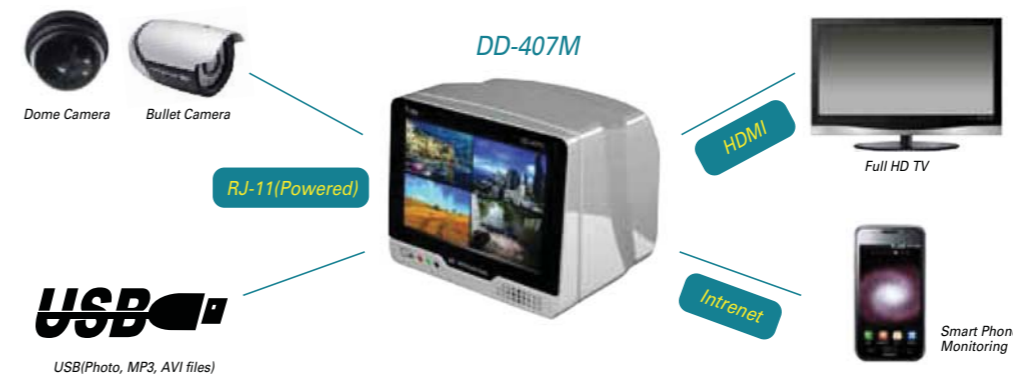
SPECIFICATION		DD-407M
Monitoring	Video Input	4CH x RJ11 Connector
	Video Output	HDMI(Full HD support)
	Display Resolution	7" Digital LCD 1280 x 800
Record & Playback	Compression	H.264
	Recording / Playback [NTSC/PAL]	Full D1 (720 x 480) 120 / 100 fps
	Concurrent Multi-Channel Playback	4CH
	Recording Mode	Continuous, Motion, Alarm, Pre-alarm
	Search Mode	Date / Time, Event, HDD Percentage
System	Database File System	Own File System
	Storage	1ea HDD [2.5" SATA]
	Data Export	External USB
	Quadplex Function	Photo, MP3, AVI video file play(Divix function)
Network	Multimedia	DivX(MP3, photo, Movie)
	Connection	Ethernet [10/100 Base]
	Protocols	Static IP, DHCP, DDNS
Interface	Remote Software	Client S/W [X-IRS]
	Audio In / Out	1Ch / -
	Alarm In / Out	4 / 1 Relay
	Serial Interface	RS 485
	External Interface	USB
	User Interface	IR Remote Control, PS/2 Mouse
	Power	DC 12V 3.3A

**RETINEX** A method bridging the gap between images and the human observation of scenes.



# Mini Compact DVR DD-407M

## System Construction



Patent



Patent applied by KIPO  
#10-1084757  
- Digital video recorder having multimedia player

You can enjoy various kinds of multi-media contents while recording CCTV with using patent applied multi-media built-in DVR technique.

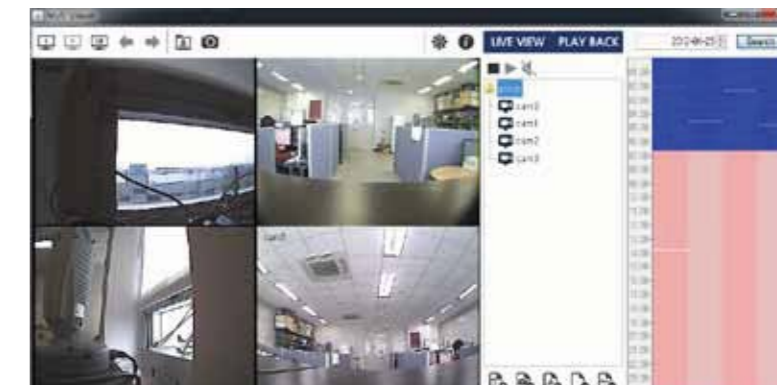
## Mobile Devices Support (Tablet PC & Smart Phone)



Support Apple iPad, iPhone, Android mobile devices

## Web Viewer

- Own Web browser use to Web monitoring
- Simultaneous real-time connections
- Easy registration and ensure the stability
- Real-time and recording video monitoring
- DDNS TCP/IP Supported





**RETINEX**

**Smallest 3Ch Vehicle DVR in the World!**  
**Ensure the highest quality of 6M compression**  
**3 Channel H.264 Compression Black Box**

**Features**

- 7V to 28V free power input
- Protection with Lock Storage Cover
- Built in G-sensor
- External GPS(Optional)
- Special Hard Case protection
- Compact Size with easy installation
- Video in : Max 3CH
- Support to Camera power
- Recording : D1 (720X480) 30FRS
- E-map Support
- Max. 32Gb SD Memory Card storage

SPECIFICATION		VD-300
Video	Input	Max. 3CH [CVBS]
	Frame Resolution	Full D1 (720 x 480)
Recording	Recording Speed	1Ch 30 fps / 2~3Ch 10~15 fps
	Recording Format	H.264 codec
	Recording Type	Event, Continuous, Parking
	Audio Recording	Microphone included PCM Compression
System	Sensor	11bit 3-axis[X, Y, Z] acceleration sensor Impact, sudden stop / acceleration / spin
	Voice announce	Built-in speaker
	Power adaptor	Rated voltage : DC 12V ~ 24V [Cigar Plug] Operating voltage : DC 7V ~ 28V
	Power consumption	12V [150mA ~ 220mA]
	Range of Temperature	Storage temperature [-30°C ~ 80°C] Operating temperature [-20°C ~ 60°C]
	Control	RS232
	Power out	DC to camera (3CH)
	Operating Temperature	0 ~ 60°C
	Power Source	DC 9 ~ 28V
	Dimension	125[W] x 55[D] x 24[H]mm
Storage	Memory Card	SD, SDHC : 2G ~ 32G
GPS	GPS	External GPS

**RETINEX** A method bridging the gap between images and the human observation of scenes.



**Camera Specification**



Rear or Front Camera

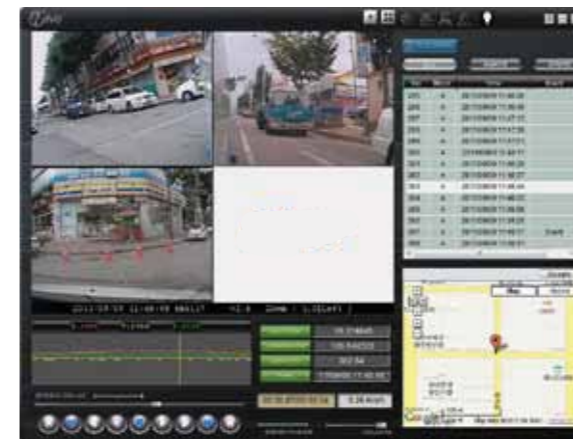


Side Camera

**Other Cameras are available**

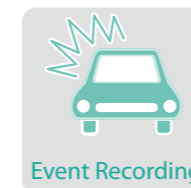
SPECIFICATION	Front or Rear Camera	Side Camera
Camera	CMOS Image Sensor	
Resolution	720 x 480	
Output	CVBS (1V Vp-p 75 ohm)	
Filter	interlace filter	
Power	5V	
Power Consumption	5V (70mA)	
Temperature Range	Storage Temperature (-30°C ~ 80°C)	
Other Functions	Installed desire spot	
Camera Recording Angle	119.8 degree	72 degree

**Operating Viewer Captured Screen**



- Retinex Solution
- G-sensor Graph
- E-map support(Google & Daum)
- GPS information provides
- Playing control panel
- Driving speed showing
- Volume control

**Recording Methods**



Event Recording

- Recording into the folder by 2 minutes
- DAT file system to prevent memorable errors
- Automatically erase sequentially from oldest files



Parking Mode

- When detect microscopic vibration it starts recording
- Before/after 40 sec recording at the event occurred
- Manually recording without any events



Continuous Recording

- Memory capacity extend and minimize power consumption with parking mode button



Voice Recording

- Recording video and voice with control button



Specification	WD-410N	WD-810N	WD-1610N
<b>Monitoring</b>			
Camera Input	4CH	8CH	16CH
Video Input	4	8	16
Video Output	1 VGA (1280 x 1024) + 1 BNC for CO-Monitor		
Audio Input	1 RCA	1 RCA	16 RCA
Audio Output	1 RCA	1 RCA	2 RCA
<b>System</b>			
Operation System	Embedded Linux OS		
Internal HDD	Support 1 SATA Device	Support 1 SATA Device	Support 2 SATA Devices
Sensor In (NO, NC) Relay Out	N/A	Sensor-in x8 Relay-out x 1	Sensor-in x16 Relay-out x 2
Serial Interface	RS-485		
USB	2 x USB 2.0		
Adaptor	Input 100 ~ 240V, Output 12V 3A		Input 100 ~ 240V, Output 12V 6A
<b>Display</b>			
Speed	120 fps	240 fps	480 fps
Resolution (Pixel)	720 x 480 (NTSC) / 720 x 576 (PAL)		
Split Screen	1, 4, SEQ	1, 4, 8, SEQ	1, 4, 8, 16, SEQ
Auto Channel Switching	Switching time : 1 ~ 999 sec		
Mode	Zoom (Digital x2 ~ x8), PIP, Auto SEQ		
<b>Recording</b>			
Video Compression	H.264 ASP (Internet Transmission : H.264)		
Dual Stream Resolution (Pixel) - Main	704 x 480, 704 x 240, 352 x 240 (NTSC) 704 x 576, 704 x 288, 352 x 288 (PAL)		
Dual Stream Resolution (Pixel) - Sub	352 x 240 (NTSC) / 352 x 288 (PAL)		
Picture Quality	5 Levels (Highest, High, Normal, Basic, Below Basic)		
Mode	Manual, Motion, Schedule	Manual, Motion, Sensor, Schedule	
Speed (NTSC)	D1 120 fps (704 x 480) / HD1 120 fps (704 x 240) / CIF 120 fps (352 x 240)		
Speed (PAL)	D1 100 fps (704 x 576) / HD1 100 fps (704 x 288) / CIF 100 fps (352 x 288)		
<b>Playback</b>			
Display	1, 4	1, 4, 8	1, 4, 8, 16
Search Mode	Date, Time, Event, Camera		
Zoom	Digital (x2 ~ x8)		
Snapshot	YES		
Speed	Normal, REW & FF (recording speed x2, x4, x8, x16, x32, x64) Frame to Frame, Pause		
Device	Int. HDD		
<b>Network</b>			
Network Interface	10 / 100 Ethernet		
Max. Transmission Rate	Dual Stream : 240 fps		
Protocol	TCP/IP, SMTP, HTTP, DHCP, PPPoE(ADSL), NTP		
Application	Windows XP/VISTA/7 (PC Client system)		
Remote Software	Licensed Application Software, IE Browser		
Account	1 Admin + 4 users		
CMS	Unlimited (Depends on bandwidth)		
3G / GPRS	Symbian, Windows Mobile, Blackberry, iPhone, Android phone		
Event Transport	E-mail		

Covert Wall Mount DVR

H.264 compression Vandal Proof DVR

Suitable at the Industrial Sites

## Features

- H.264 H/W Compression
- Available in 4, 8, 16Ch models
- Real Time Line Display
- Dual Streaming
- Web Client
- Prerecording
- Watermark
- Audio Recording and Two-way Audio
- Multiple control methods : IR remote controller, USB Mouse
- Motion Detection, Video Loss
- Various Back up support : USB
- Alarm triggering screen tips, buzzer, PTZ preset, e-mail
- CMS Networking access for remote Live Monitoring, Recording, Playback

## Mobile Devices Support (Tablet PC & Smart Phone)



Support Apple iPad, iPhone, Android mobile devices

## Advantage Features



### Noise Free

- Basically, it designed to maintain 75% of CPU maximum critical value is reason of heating, minimize making heat.
- Thus, it does not need extra cooling fan on the main body that in the external case.
- However, it has been selling positively not only in the North America where temperature is -40 degree, but also in Kuwait where it is over 40 degree.



### All-in-one fitted 10.2" industrial LCD

- We use industrial LCD for our Wall Mount DVR, can use over 150% longer than general monitor.
- Less heat making with using LED Back Light.
- After installation, you can control only the LCD power using on/off switch.



### Multi-tasking

- We provides CMS for free that can connect with up to 64CH of cameras, it could be monitoring DVRs those are installed various location (based on 16 of 4CH devices).
- If it connected with internet, you can use almost of functions such as Playback, setting, and etc on web browsers without special program.
- You can use real-time view and playback with iPad, iPhone, Android, or other smart phones.



### Durable external case

- Wall Mount DVR produced with durable steel plates to resist against strong damage from outside.
- Moreover, it has Water Proof structure so that you can use in rain.
- An electronic warning sticker that attached on the external case makes not easy to find out DVR to make confusing intruders.



### Utilize Variously

- In case of US, franchise, restaurant, and etc, DVR has been utilized various field.
- Main distributors : Wendy's burger, McDonald's, etc.

All New!!!



**RETINEX**

**4CH High Quality Vehicle DVR, Full D1 / 120 fps**  
**Remote Monitoring in the Moving Vehicle**  
**Smart Phone Support, Remote Downloading**  
**Patent Applied**

SPECIFICATION		VD-400N		
Video	Input	4CH (NTSC)		
	Output	Composite 1.0 Vp-p, 75Ω (NTSC)		
Audio	Input	4CH		
	Output	1CH (MONO)		
Alarm	Sensor Input	Support		
	Alarm Output	Support		
Live	Frame Rate	Full D1(720 x 480) / 30 (fps/ch)		
	Screen Split	1, 4		
Recording	Compression	H.264		
	Source File Format	Own file format / AVI file format		
	Resolution & Recording Speed (NTSC)	360 x 240	Max. 120 fps(30 fps/ch)	
		352 x 288	Max. 120 fps(30 fps/ch)	
		720 x 240	Max. 120 fps(30 fps/ch)	
		720 x 288	Max. 120 fps(30 fps/ch)	
	Adjust Frame Rate per channel	720 x 480	Max. 120 fps(30 fps/ch)	
		720 x 576	Max. 120 fps(30 fps/ch)	
	Frame Rate Concentration	Event Driven		
	Image Quality Level	VBR	3 Levels, 5 Levels	
		CBR	3 Levels, 5 Levels	
	Recording Mode	Continuous / Motion, Sensor, or both		
Motion Detection Sensitivity	Support			
Pre-recording by Alarm	1 ~ 30 sec			
Post-recording by Alarm	2 ~ 300 sec			
Storage	Memory Card	SATA 320GB(or Over) / SD Card		
	Multi-Language	Support		
Additional Function	GPS	1 Serial port for External GPS		
	G-Sensor	3 axis accelometer support		
	External IR Receiver for Remote Controller	Required 1 port optional cable		
System	Control	IR / Ethernet(10/100 Mbps) / RS232		
	Operation System	Embedded Linux (Ver. 2.6.xx)		
	Dimension	230 x 53 x 200 mm		
	Weight	1Kg (2Kg with Package)		
	Power out	DC to camera (4CH)		
	Operating Temperature	0 ~ 60°C		
Power Source	DC 9 ~ 28V			

**Features**

- Support Up to 4CH
- 7V to 28V free power input
- Built in G-sensor
- Special Hard Case protection
- Compact Size with easy installation
- Support to Camera power
- External GPS
- H.264 compression codec
- Storage : SD / CF / HDD(SSD)
- Max. D1(720 x 480) resolution
- 3G/4G support(optional)
- Wi-Fi connection support(LAN)

**RETINEX** A method bridging the gap between images and the human observation of scenes.

Patent

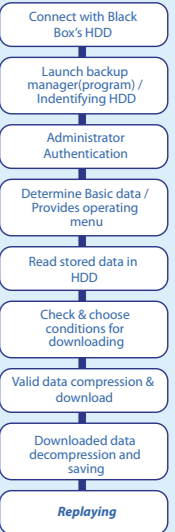
**Operating Viewer Screen Captured**



- Retinex Solution
- Split channel view
- Live view supply
- Playing control pannel
- Time flowing graph
- Camera Setup



Patent applied  
#10-2012-0042253  
A Data back-up method for black-box of vehicle



**Having Strong Network Connection**



- Utilized DVR advanced functions and performance than existing Black Box
- Both-way communication available with WiCVT applying using wireless network (Extra additional service extendible)
- Real-time monitoring integration with GIS map
- Real-time / both-way audio delivering(Broadcasting)
- Lane Violation Enforcement (Automatically sent information about the vehicle in violation with just one switch)
- Store exact evidence data of car accidents
- National serviceable wireless network available



# Wall Mount DVR

WD-410H/WD-810H/WD-1610H



**4CH 120 fps/8CH 240 fps/16CH 480 fps**  
**H.264 4~16CH Achieved**  
**Industrial integrated DVR**  
**Water Proof/Vandal Proof Outdoor DVR**  
**4CH Audio, BNC, VGA Output**

## Features

- H.264 Hardware Compression
- Max. 16ch model Available
- Pentaplex Function
- Multi-language supportable
- Camera : NTSC, PAL. (Auto-Detection)
- Easy to control P/T/Z
- 128Ch CMS program Provided
- Power : DC 12V, 3.3A ~ 6V
- 10.2" Wide Digital Industrial LCD
- Smart Phone Support
- Wall Mount type case
- Water Proof & Vandal Proof
- Specially Designed for industrial site
- Supports Apple, Android mobile devices

Specification	WD-410H	WD-810H	WD-1610H
Video Input	4CH	8CH	16CH
Video Output	1CH BNC TV output, 1 VGA output, SPOT		
Video Signal	NTSC and PAL		
Audio Input	4CH		
Audio Output	1CH, RCA		
Operating System	Embedded Linux OS		
Pentaplex Function	Live Display, Recording, Playback, Backup & Remote access		
Control Device	Front pannel, Mouse, IR remote control		
Compression	H.264 H/W Compression		
Display LCD	10.2" Digital Industrial LCD		
Video Resolution	Realtime		
Video Recording (NTSC/PAL)	CIF 120 fps	CIF 240 fps	CIF 480 fps
	2CIF 120 fps	2CIF 120 fps	2CIF 240 fps
	D1 120 fps	D1 60fps	D1 120 fps
Video Display Split	CIF 100 fps	CIF 200 fps	CIF 400 fps
	2CIF 100 fps	2CIF 100 fps	2CIF 200 fps
	D1 100 fps	D1 50fps	D1 100 fps
Motion Detection	Motion Detection with Notification		
Alarm Input	4 In		
Relay Output	1 Out		
HDD	SATA x 1ea.		
Recording Mode	Manual, Continuous, Video Detection(Motion, Video Loss)Sensor		
Function	Watermark, Pre-recording		
Search Mode	Time/Date, Event(Sensor, Alarm, Video loss)		
Playback	Quick Search, Live Search, Calendar Search, Time Search		
Backup	USB, CD/DVD - RW		
Network Function	TCP/IP, DHCP, NeoDHS, DDNS, PPPOE, E-mail		
Remote Feature	Net-Web Client, Live Streaming, Remote Playback, E-MAP,		
Communication Port	RS232, RS485, Ethernet, 2 USB		
CMS (Optional)	Max. 128CH CMS/NVR Support(Optional)		

# Wall Mount DVR

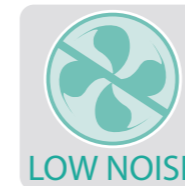
WD-410H/WD-810H/WD-1610H

## Mobile Devices Support (Tablet PC & Smart Phone)



Support Apple iPad, iPhone, Android mobile devices

## Advantage Features



LOW NOISE

### Noise Free

- Basically, it designed to maintain 75% of CPU maximum critical value is reason of heating, minimize making heat.
- Thus, it does not need extra cooling fan on the main body that in the external case.
- However, it has been selling positively not only in the North America where temperature is -40 degree, but also in Kuwait where it is over 40 degree.



10.2" LCD

### All-in-one fitted 10.2" industrial LCD

- We use industrial LCD for our Wall Mount DVR, can use over 150% longer than general monitor.
- Less heat making with using LED Back Light.
- After installation, you can control only the LCD power using on/off switch.



Multi Tasking

### Multi-tasking

- We provides CMS for free that can connect with up to 64CH of cameras, it could be monitoring DVRs those are installed various location (based on 16 of 4CH devices).
- If it connected with internet, you can use almost of functions such as Playback, setting, and etc on web browsers without special program.
- You can use real-time view and playback with iPad, iPhone, Android, or other smart phones.



Durable Case

### Durable external case

- Wall Mount DVR produced with durable steel plates to resist against strong damage from outside.
- Moreover, it has Water Proof structure so that you can use in rain.
- An electronic warning sticker that attached on the external case makes not easy to find out DVR to make confusing intruders.



Wide Usage

### Utilize Variously

- In case of US, franchise, restaurant, and etc, DVR has been utilized various field.
- Main distributors : Wendy's burger, McDonald's, etc.

# Wall Mount DVR

MS Windows Based  
DVR Card install



*Easy installation Max. 16CH DVR*  
*10.2" Digital touch screen LCD*  
*Formula - MPEG4 Compression*

## Features

- Familiar for Windows users
- DIMM DDR3 2Gb Memory
- Easy Control with touch screen (without extra input device)
- 4 / 8 / 12 / 16Ch Available
- NTSC 640x480 PAL 720x576
- Easy installation
- Net Client provides (Real-time monitoring support)
- PTZ camera control available
- Watermark support
- Schedule Recording available
- Motion Detecting

Specification	MS Windows Based DVR Card install			
Main Board	CPU	Intel Atom CPU D425 1.8GHz		
	Chipset	Intel NM10 Express		
	Memory	DIMM DDR3 2GB		
	VGA	Intel Graphics Media Accelerator 3150		
	Audio	Realtek ALC662 Audio codec		
	LAN	PCIE x 1 Gigabit LAN 10/100/1000 Mb/s		
	I/O Pannel	PS2 mouse x 1, PS2 keyboard x 1, Support ECP/EPP x 1, COM x 1, VGA x 1, USB 2.0 x 4, LAN RJ-45 x 1, Jack Audio : entrée, sortie, microphone x 1		
Power	12V, 5A			
DVR Card	Video Input	4 / 8 / 12 / 16ch		
	Video Output	1CH TV output		
	Recording Speed	120 fps (NTSC) / 100 fps (PAL)		
	Surveillance Speed	120 fps (NTSC) / 100 fps (PAL)		
	Resolution	NTSC	320 x 240, 640 x 480	
		PAL	360 x 288, 720 x 576	
Video Display	1 / 4 / 6 / 8 / 9 / 13 / 16CH			
Compression	Formula (MPEG4)			

# Wall Mount DVR

MS Windows Based  
DVR Card install

## Smart Search



- Select a screen to control
- Designate area to detect motion
- Time line to search by time flow
- Sensitivity selection
- Automatically detects the desired data

## Watermark

- Indicates HDD which is Installed to DVR system
- Indicates selected HDD information from store disk
- The oldest image data will be replaced with new image data (when insufficient of HDD space)
- Each channel can setup frame rate & image quality
- Watermark insert to prevent image tampering



## Direct or Remote control software



- Smart DVR Formula Software for allow monitoring/searching /direct setting on PC DVR



- Smart DVR Formula (Net Client) Software for allow monitoring/searching /direct setting remotely

## Simple and user friendly 'UI'



- Real time Video out
- Channel type selection panel (Enlarge selected channel)
- Screen Partition Panel
- P/T/Z Control Panel
- Control panel
- DVR State Information Panel
- Audio Volume Control Panel



*Digital Matrix Function  
Max. 64Ch supports / Full HD resolution  
Easy & Professional device configurations  
Intelligent Surveillance supports*

**System Requirements**

- CPU : Intel Pentium 4 3.0GHz (Recommend Core2Duo or above)
- OS : Microsoft Window XP, Vista, 7
- RAM : 1GB (Recommend 2GB or above)
- Graphic Memory : 64MB (Recommend - 128MB or above)
- DirectX 9.0C or above



**Features**

- Multi-tasking
- Max. 64 channels
- Bookmark
- Interactive Interface
- Paranomic Search
- Watermarking Verification System
- Easy and Various Data Remote Backup



**RETINEX**

*A method bridging the gap between images and the human observation of scenes.*

"Retinex" patent applied technique that developed cooperate with Chonnam National University. Maximize distinguish of incident videos

Before



Provides clear image at night : Image improving solution developed with retinex algorithm

\* Retinex Solution : A solution that bridge the gap between human eyes and camera lens using retinex algorithm(Image sensor has lower dynamic range than human eyes, so occurs losing the image)

Retinex Solution

After



RETINEX Activation Button



"Retinex" means react necessarily against the strength and spectral of light(human senses feel brightness and color that reflected from of an object) into human eyes.

# Vehicle DVR VD-100



**Accident rate plummeted!**  
**Real HD(1280 x 720) 30 fps**  
**Ensure fully optimized video quality with VBR Recording**  
**SD card optimized to extend capacity and life time**

**RETINEX**

## Features

- Real HD (1280 x 720) 30 fps, Clear High quality video
- Install all-time power saving device to prevent discharging the battery.
- Guarantees optimized video in various environment with VBR recording.
- Parking tailights function can control in setting menu.
- Built-in external GPS & high performance G-sensor(3-axis acceleration sensor)
- Use dedicated DB system for vehicle blackbox
- Provides real-time viewing & voice guiding comments.
- Provides private video viewer
- Significantly life-time & capacity extend with SD card optimization.

Specification	VD-100
Camera	CMOS Digital Camera (Angle : 110° )
Recording Resolution	Real HD(1280 x 720) / 30 fps
Recording Format	H.264 VBR Recording
Output Device	CVBS output(1V Vp-p 75Ω)
GPS	External GPS module
Shock Sensor	Internal 11BIT 3axis(x, y, z) acceleration sensor Detecting Shock, Sudden Brake, Sudden Acceleration, Sudden spin SD memory card
Storage Device	SD, SDHC : 2 GB ~ 32 GB available
Audio Record	Install high sensible microphone / PCM compression
Voice Guide	Built-in high quality speaker for guiding comments
Recording Method	Event, Continuous, Parking GPS Embedded
Time setting	- Before GPS connection : run internal RTC time - After GPS connection : set internal RTC time Without GPS : Use time setup menu in setting menu of PC viewer. After time setting, insert SD card to device will setup time automatically.
Power	Rated Voltage : DC 12V ~ 24V cigar plug Operating Voltage : DC 7V ~ 28V
Power Consumption	12V (140mA ~ 170mA)
Temperature	Storage temperature (-30°C ~ 80°C) Operating temperature (-20°C ~ 70°C)
Etc.	Video Quality improvement, Security(LED) adjustable in preferences

**RETINEX** A method bridging the gap between images and the human observation of scenes.



# Vehicle DVR VD-200



**RETINEX**

**Stylish & Functional 2CH, HD Vehicle Black box**  
**Don't conflict anymore within function, style, and price.**  
**Catch both style and function you want.**

## Features

- 1280 x 720, 2M pixels Real HD Black Box
- The Best Rear Camera applied 1/3" Image sensor
- Don't miss anytime with 130 degree wide angle.
- Save the video separately when events occur.
- Motion detecting installed.
- 360 degree freely rotating stands.
- Power off function to prevent discharging.
- SD Format allows on the device.
- Super-condenser applied to store stably.
- External GPS equipped

### Rear Camera

Tinted / 2M pixels  
CMOS 1/3", Image Sensor  
130° angle of view



### Real HD

Make the experience real HD Black box  
- 2M pixels, 1280 x 720



### Secret of Non-distortion 130°

Applied 130 degree that suitable for black box.  
Provides clear images without distortion.



### Upgraded 2CH

Diagonal 130°, 2M pixels, CMOS 1/3"  
Provides best image of rear side.



### Motion/Shock Detection at car parked

Detect motion and damage, store the video.

### External GPS

Gives more exact driving / accident records  
(Date, Speed, Location, Acceleration analysis)

### Prevent battery discharge

Installed the power off function in order to the  
battery voltage to prevent discharging the car.

### SD format

Supporting format SD card in the device.

### 360 degree Rotating Stands

Allows rotating 360 degree left/right side set  
on the stand. Useful to record any degree.

**RETINEX** A method bridging the gap between images and the human observation of scenes.

